

ECONOMIC INDICATORS QUEENSLAND

EMBARGOED UNTIL 11:30AM FRI 29 SEPTEMBER 1995

SEPTEMBER KEY POINTS

AUSTRALIA

GDP(A)

- The trend estimate of GDP (A) in June quarter 1995 was \$104 604m, increasing 0.5% from March quarter 1995 and 3.2% from June quarter 1994.

CURRENT ACCOUNT DEFICIT

- The trend estimate for the July current account deficit was \$2 529m, down \$13m, or 0.5%, on the trend estimate for June 1995. This is the first decrease in the monthly trend estimate of the current account deficit since December 1993.

QUEENSLAND

DWELLING UNIT APPROVALS

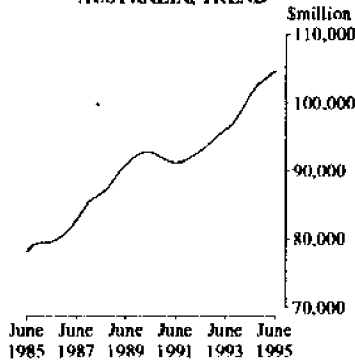
- Total dwelling units approved, in trend terms, decreased to 2 772 in July 1995, a decline of 2.8% from June 1995 and 41.8% from July 1994.
- In trend terms new housing approvals for July 1995 were 1 972, decreasing 2% from June 1995 and 35.7% from July 1994.

DWELLING UNIT COMMENCEMENTS

- Queensland's new housing commencements for June quarter 1995 totalled 6 213. The June quarter figure continued the downward trend, declining marginally from March quarter 1995 and by 32.7% from June quarter 1994.
- New other residential building commencements increased by 217 from March quarter 1995 to reach 2 918 in June quarter 1995 but this was a 33.5% decrease from the June quarter 1994 figure.

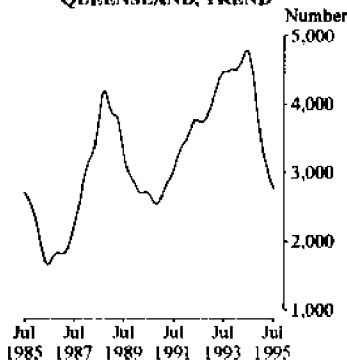


GROSS DOMESTIC PRODUCT (A), AUSTRALIA, TREND



Source: ABS 5206.0

TOTAL DWELLING UNITS APPROVED, QUEENSLAND, TREND



Source: ABS 8731.0

INQUIRIES

- For further information about these and related statistics, contact Information Inquiries on 07 3222 6351, or any ABS office.

ECONOMIC INDICATORS NOTES

FORTHCOMING ISSUES

ISSUE	RELEASE DATE
October 1995	25 October 1995
November 1995	24 November 1995
December 1995	28 December 1995

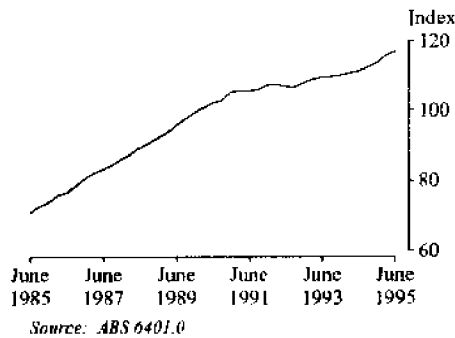
CHANGES IN THIS ISSUE

This is the first issue to have a list of tables showing the data items available in this publication. It is located on Pages 4 and 5.

R.A. CROCKETT
DEPUTY COMMONWEALTH STATISTICIAN

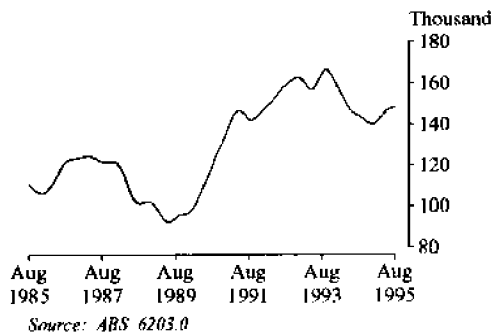
COMMENTARY

CONSUMER PRICE INDEX, BRISBANE



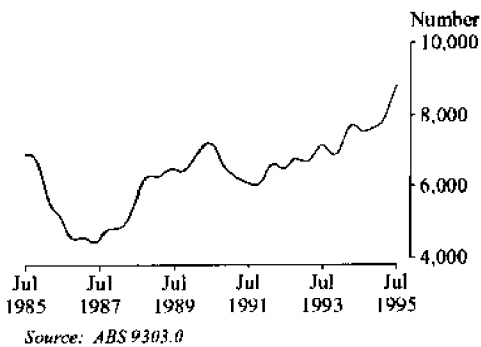
The consumer price all groups index for Brisbane in June quarter 1995 increased marginally to 116.9 from 115.8 in March quarter 1995. In the 12 months to June 1995, the consumer price all groups index rose 4.8%, housing increased 9.9%, food 3.9% and transportation 3.2%.

UNEMPLOYED PERSONS, QUEENSLAND, TREND



Queensland's unemployment in trend estimate terms increased to 148 300 persons in August 1995, increasing marginally from July 1995 and by 2.7% from August 1994. The number of unemployed males has been increasing since January 1995, rising 7.7% in the 12 months to August 1995. The number of females unemployed for August 1995 was 59 100, decreasing 1% from July 1995 and 4.1% from August 1994.

NEW PASSENGER VEHICLE REGISTRATIONS, QUEENSLAND, TREND



New passenger vehicle registrations in Queensland in trend terms for July 1995 were 8 818, increasing 2.9% from June 1995 and 16.0% from July 1994. Total new motor vehicle registrations, in trend estimate terms, increased by 3% from June to July 1995 to 11 360, a 14.6% increase from the July 1994 figure.

LIST OF TABLES

MAJOR INDICATORS, AUSTRALIA	1	Australian National Accounts	7
		Balance of Payments	6
		Exchange Rate Levels	6
		Foreign Investment in Australia	6
MAJOR INDICATORS, QUEENSLAND	2	Bankruptcies	9
		Final Consumption Expenditure	8
		Foreign Trade	9
		Gross Fixed Capital Expenditure	8
		Gross State Product – Income Based	8
		Interstate Trade	9
		Private New Capital Expenditure	8
		State Final Demand	8
		Total Business Names Registered	9
PRODUCTION AND CONSUMPTION	3	Indexes of Manufacturing Gross Product	10
		Mineral Exploration	11
		Mineral Production	11
		New Motor Vehicle Registrations	11
		Retail Trade Turnover	11
		Short-term Accommodation	10
LABOUR FORCE AND DEMOGRAPHY	4	Average Weekly Earnings	13
		Award Rates of Pay Indexes	14
		Employed Persons	12
		Employed Wage and Salary Earners	13
		Estimated Resident Population	14
		Estimated Resident Population at 30 June	14
		Industrial Disputes	14
		Industry of Employed Persons	13
		Job Vacancies	13
		Labour Force	12
		Overtime	13
		Participation Rates	12
		Population Growth	14
		Short-term Overseas Movement	14
		Unemployed Persons	12
Unemployment Rates	12		
BUILDING AND CONSTRUCTION	5	Building Approvals	15
		Dwelling Unit Commencements	15
		Engineering Construction	15

LIST OF TABLES

PRICE INDEXES	6	Articles Produced by Manufacturing Industry	16
		Consumer Price Index	16
		Established House Index	16
		Export Price Index	16
		Farmers' Terms of Trade	16
		Import Price Index	16
		Materials Used in Building Other than House	16
		Materials Used in House Building	16
		Materials Used in Manufacturing Industry	16
		Prices Paid by Farmers	16
		Prices Received by Farmers	16
BANKING AND FINANCE	7	Banking Deposits	17
		Banking Loans	17
		Building Society Lending Operations	17
		Commercial Finance Commitments	17
		Housing Finance for Owner Occupation	17
		Interest Rates	17
		Lease Finance Commitments	17
		Personal Finance Commitments	17
BUSINESS EXPECTATIONS (SHORT AND MEDIUM TERM)	8	Capital Expenditure	18
		Employment	18
		International Trade	18
		Investment	18
		Operating Expenses	18
		Sales	18
		Trading Performance	18



MAJOR INDICATORS—Australia

BALANCE OF PAYMENTS.....

Month	Merchandise exports	Merchandise imports	Balance on merchandise trade	Balance on goods and services	Balance on current account	Net income and unrequited transfers
TREND (\$ million)						
1995						
April	5 807	6 590	-773	-864	-2 485	n.a.
May	5 891	6 660	-769	-864	-2 531	n.a.
June	5 968	6 687	-806	-850	-2 542	n.a.
July	6 029	6 680	-822	-837	-2 529	n.a.

TREND (% change from corresponding period of previous year)

1995						
July	13.0	15.6	n.a.

ORIGINAL (\$ million)

1995						
April	5 612	5 696	-84	-163	-1 820	-1 464
May	6 151	6 979	-828	-1 039	-3 016	-1 692
June	5 685	6 228	-543	-796	-2 508	-1 339
July	6 244	7 195	-951	-1 088	-2 575	-1 252

ORIGINAL (% change from corresponding period of previous year)

1995						
July	16.1	20.2	8.9

FOREIGN INVESTMENT IN AUSTRALIA ¹.....

EXCHANGE RATE LEVELS ².....

Quarter	Official \$m	Non-official \$m	Net foreign debt \$m	\$US/\$A	Yen/\$A	Trade-weighted index ³
1994						
September	63 636	311 424	162 719	0.7389	73.22	53.4
December	72 632	294 456	164 017	0.7554	74.69	56.2
1995						
March	73 292	306 052	168 878	0.7486	72.09	50.7
June	76 466	318 852	180 484	0.7278	61.42	48.4

% CHANGE FROM CORRESPONDING PERIOD OF PREVIOUS YEAR

1995						
March	9.9	-0.1	0.6	5.8	-5.4	-2.7
June	22.4	3.6	10.6	0.4	-17.9	-8.7

¹ At end of period.

² Source: Reserve Bank of Australia.

³ Base: May 1970=100.0.



MAJOR INDICATORS—Australia *continued*

AUSTRALIA—NATIONAL ACCOUNTS ¹.....

Quarter	Final consumption expenditure		Gross fixed capital expenditure		Exports of goods and services	Imports of goods and services	Gross non-farm product income based	Gross domestic product income based
	Private	Government	Private	Public				

TREND (\$ million)

1994								
September	61 190	17 296	18 435	4 669	22 330	21 553	99 242	102 612
December	61 939	17 361	18 616	4 782	22 364	22 399	100 268	103 362
1995								
March	62 570	17 731	18 313	4 982	22 413	22 932	100 860	103 870
June	63 035	18 129	17 856	5 131	22 424	23 249	101 048	104 172

TREND (% change from corresponding period of previous year)

1995								
June	4.3	4.2	1.8	10.3	1.0	13.8	3.5	2.8

ORIGINAL (\$ million)

1994								
September	61 643	17 456	18 313	4 262	21 955	22 849	99 220	102 359
December	65 289	17 463	20 095	4 761	23 180	22 792	104 865	109 715
1995								
March	59 710	16 807	16 607	4 352	22 085	22 085	97 008	99 229
June	62 129	18 498	18 169	6 456	21 853	22 449	100 944	103 210

ORIGINAL (% change from corresponding period of previous year)

1995								
June	5.2	3.4	1.0	8.5	-0.8	13.7	4.2	3.8

AUSTRALIA—NATIONAL ACCOUNTS ¹.....

Quarter	Gross domestic product — average	Composite leading indicator ² ...	Company profits
	\$m	Deviation from long-term trend	\$m

TREND

1994			
September	102 559	..	6 497
December	103 368	..	6 415
1995			
March	104 053	..	6 287
June	104 604	..	6 231

TREND (% change from corresponding period of previous year)

1995			
June	3.2	..	-0.3

ORIGINAL

1994			
September	102 602	1.15	7 121
December	109 514	0.87	7 653
1995			
March	99 118	0.25	5 082
June	103 555	-0.47	5 470

ORIGINAL (% change from corresponding period of previous year)

1995			
June	4.1	..	3.4

¹ At average 1989-90 prices.

² See explanatory note 6, page 19.



MAJOR INDICATORS—Queensland

Quarter	FINAL CONSUMPTION EXPENDITURE.....		GROSS FIXED CAPITAL EXPENDITURE		STATE FINAL DEMAND	GROSS STATE PRODUCT— INCOME BASED
	Private	Government	Private	Public		
TREND (\$ million)						
1994						
June	9 980	2 626	3 219	1 047	16 872	16 761
September	10 107	2 610	3 315	1 071	17 103	16 980
December	10 213	2 608	3 355	1 082	17 258	17 102
1995						
March	10 295	2 644	3 380	1 076	17 375	17 151

TREND (% change from corresponding period of previous year)

1995						
March	4.7	1.7	9.4	6.5	5.2	4.6

ORIGINAL (\$ million)

1994						
June	9 705	2 675	3 180	1 289	16 829	16 683
September	10 136	2 675	3 456	969	17 236	17 204
December	10 848	2 644	3 553	1 110	18 155	16 974
1995						
March	9 775	2 507	3 089	926	16 297	17 151

ORIGINAL (% change from corresponding period of previous year)

1995						
March	4.2	3.2	-11.0	521.5	5.6	4.7

PRIVATE NEW CAPITAL EXPENDITURE.....

Quarter	Building and structures	Equipment, plant and machinery	Total
TREND (\$ million)			
1994			
June	426	728	1 154
September	433	772	1 205
December	458	811	1 268
1995			
March	503	860	1 363

TREND (% change from corresponding period of previous year)

1995			
March	26.0	26.4	26.3

ORIGINAL (\$ million)

1994			
June	388	742	1 129
September	431	769	1 201
December	495	812	1 307
1995			
March	464	803	1 267

ORIGINAL (% change from corresponding period of previous year)

1995			
March	7.9	23.6	17.4



MAJOR INDICATORS—Queensland *continued*

Quarter	TOTAL BUSINESS NAMES REGISTERED ¹	BANKRUPTCIES ²	INTERSTATE TRADE ³	
	No.	No.	Exports	Imports
			\$m	\$m
1994				
September	166 395	613	1 230	3 177
December	165 514	620	1 289	3 286
1995				
March	166 988	746	1 361	3 052
June	171 834	762	n.y.a.	n.y.a.
% CHANGE FROM CORRESPONDING PERIOD OF PREVIOUS YEAR				
1995				
March	8.6	11.2	21.7	14.0
June	6.8	24.1	n.y.a.	n.y.a.

FOREIGN TRADE.....				
Month	Exports	Imports		
	\$m	\$m		
1995				
April	1 030	566		
May	1 175	744		
June	1 002	651		
July	1 326	644		
% CHANGE FROM CORRESPONDING PERIOD OF PREVIOUS YEAR				
1995				
June	6.5	15.7		
July	6.3	6.7		

¹ Stock at end of period. Source: Department of Queensland Emergency Services. ² Source: Commonwealth Attorney-General's Department. ³ Source: Queensland Government Statistician.



PRODUCTION AND CONSUMPTION

AUSTRALIA—INDEXES OF MANUFACTURING GROSS PRODUCT ¹

Quarter	Food, beverages and tobacco	Textiles, clothing, footwear and leather	Chemicals, petroleum and coal	Metal products	Machinery and equipment	All groups
TREND						
1994						
September	121.3	79.5	115.2	109.0	122.0	115.0
December	121.4	79.1	116.3	110.0	124.6	116.2
1995						
March	119.7	81.3	116.5	109.5	126.5	116.6
June	118.0	84.1	116.2	108.6	127.0	116.7

TREND (% change from corresponding period of previous year)

1995						
June	-0.2	0.5	2.6	2.1	6.4	3.6

ORIGINAL

1994						
September	122.8	82.8	118.0	113.0	124.0	118.1
December	131.2	78.1	118.3	112.5	130.2	121.8
1995						
March	113.6	78.3	113.3	103.2	120.0	110.3
June	115.6	82.9	115.5	108.6	126.7	115.3

ORIGINAL (% change from corresponding period of previous year)

1995						
June	1.8	1.1	2.2	3.8	4.2	4.2

QUEENSLAND

SHORT-TERM ACCOMMODATION

LICENSED HOTELS, MOTELS WITH FACILITIES

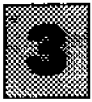
SELF CONTAINED UNITS, FLATS AND HOUSES

Quarter	Rooms available	Room nights occupied	Room occupancy rate	Takings from accommodation	Units available	Unit nights occupied	Unit occupancy rate	Takings from accommodation
	'000	'000	%	\$m	'000	'000	%	\$m
1994								
June	40.2	2 202	60.2	190.5	16.7	768	50.7	42.8
September	40.4	2 556	68.9	222.6	17.4	1 138	71.2	66.6
December	40.8	2 405	64.2	225.3	18.0	985	59.5	65.0
1995								
March	41.0	2 188	59.4	204.0	17.8	919	57.3	62.1

% CHANGE FROM CORRESPONDING PERIOD OF PREVIOUS YEAR

1994								
December	1.6	4.1	2.6	10.8	8.6	9.2	0.7	20.2
1995								
March	2.3	2.2	..	7.0	9.2	6.5	-2.6	11.5

¹ At average 1989-90 prices. Base: 1989-90=100.0.



PRODUCTION AND CONSUMPTION *continued*

QUEENSLAND.....

MINERAL PRODUCTION.....

MINERAL EXPLORATION

Quarter	<i>Black coal (saleable) ¹</i>	<i>Copper</i>	<i>Gold</i>	<i>Total</i>	\$m
	'000 tonnes	'000 tonnes	'000 kg	\$m	
1994					
September	24 898.0	65.5	7.8	n.y.a.	45.0
December	22 768.0	n.y.a.	n.y.a.	n.y.a.	53.7
1995					
March	23 126.0	n.y.a.	n.y.a.	n.y.a.	32.4
June	n.y.a.	n.y.a.	n.y.a.	n.y.a.	44.9

% CHANGE FROM CORRESPONDING PERIOD OF PREVIOUS YEAR

1995					
March	15.2	n.y.a.	n.y.a.	n.y.a.	7.3
June	n.y.a.	n.y.a.	n.y.a.	n.y.a.	21.4

QUEENSLAND.....

RETAIL TRADE TURNOVER

NEW MOTOR VEHICLE REGISTRATIONS ²

Month	\$m	<i>Passenger vehicles</i>	<i>Total</i>
		No.	No.
TREND			
1995			
April	1 776.0	8 107	10 412
May	1 794.4	8 346	10 734
June	1 810.4	8 573	11 030
July	1 822.5	8 818	11 360

TREND (% change from corresponding period of previous year)

1995			
June	9.5	11.5	9.6
July	9.1	16.0	14.6

ORIGINAL

1995			
April	1 665.3	8 348	10 755
May	1 743.5	8 963	11 568
June	1 773.2	7 115	9 555
July	1 742.6	10 257	13 234

ORIGINAL (% change from corresponding period of previous year)

1995			
June	11.5	-8.2	-8.8
July	7.2	18.6	13.7

¹ Source: Queensland Coal Board

² Excluding motor cycles, mobile equipment and trailers.



LABOUR FORCE AND DEMOGRAPHY—Queensland

UNEMPLOYMENT RATE..... PARTICIPATION RATE.....

Month	UNEMPLOYMENT RATE				PARTICIPATION RATE		
	Males	Females	Persons	Persons aged 15 to 19 years	Males	Females	Persons
	%	%	%	%	%	%	%

TREND

1995	Males	Females	Persons	Persons aged 15 to 19 years	Males	Females	Persons
May	9.1	8.5	8.8	n.a.	75.2	55.7	65.4
June	9.2	8.4	8.9	n.a.	75.2	55.7	65.3
July	9.3	8.3	8.9	n.a.	75.1	55.6	65.3
August	9.4	8.3	8.9	n.a.	75.0	55.4	65.1

ORIGINAL

1995	Males	Females	Persons	Persons aged 15 to 19 years	Males	Females	Persons
May	10.0	8.6	9.4	24.5	75.0	55.5	65.2
June	9.0	8.3	8.7	23.0	75.1	55.9	65.4
July	9.0	7.6	8.4	21.0	74.9	55.3	65.0
August	8.9	8.3	8.6	20.6	74.4	54.4	64.3

EMPLOYED PERSONS..... UNEMPLOYED PERSONS..... PERSONS IN THE LABOUR FORCE

FULL-TIME..... PART-TIME..... TOTAL

Month	EMPLOYED PERSONS			UNEMPLOYED PERSONS			PERSONS IN THE LABOUR FORCE		
	Males	Females	Persons	Males	Females	Persons	Males	Females	Persons
TREND ('000)									
1995									
May	765.6	374.3	n.a.	n.a.	1 511.3	85.7	60.7	146.4	1 657.7
June	765.0	378.4	n.a.	n.a.	1 514.0	87.1	60.2	147.3	1 661.4
July	764.3	381.2	n.a.	n.a.	1 515.6	88.3	59.7	148.0	1 663.6
August	763.6	381.9	n.a.	n.a.	1 515.4	89.2	59.1	148.3	1 663.7

TREND (% change from corresponding period of previous year)

1995	Males	Females	Persons	Persons aged 15 to 19 years	Males	Females	Persons		
August	1.9	7.1	n.a.	n.a.	5.0	7.7	-4.1	2.7	4.8

ORIGINAL ('000)

1995	Males	Females	Persons	Persons aged 15 to 19 years	Males	Females	Persons		
May	755.7	374.0	92.7	275.3	1 497.6	94.5	61.2	155.7	1 653.3
June	765.6	383.0	95.1	274.6	1 518.4	85.2	59.7	144.9	1 663.3
July	766.2	380.1	94.0	276.9	1 517.2	85.3	54.3	139.7	1 656.9
August	760.6	369.4	96.9	273.4	1 500.3	83.8	58.2	141.9	1 642.2

ORIGINAL (% change from corresponding period of previous year)

1995	Males	Females	Persons	Persons aged 15 to 19 years	Males	Females	Persons		
August	1.5	5.6	17.6	8.4	4.6	8.3	0.2	4.7	4.7

INDUSTRY OF EMPLOYED PERSONS.....

Quarter	Mining '000	Manufact- uring '000	Construction '000	Wholesale and retail trade '000	Accom- modation, cafes and restaurants '000	Transport and storage '000	Finance and insurance '000	Property and business services '000	Government adminis- tration and defence '000	Health and community services		Other '000	Total '000
										Education	'000		
1994													
August	13.6	174.9	142.6	300.9	77.0	75.5	41.7	127.8	45.8	98.7	126.5	208.7	1 433.7
November	13.2	180.9	142.7	306.7	76.1	79.5	44.1	134.8	50.7	96.9	127.7	218.1	1 471.5
1995													
February	19.2	177.1	138.5	299.0	77.3	81.2	50.6	139.0	58.6	97.2	128.8	214.3	1 480.6
May	16.8	184.8	127.7	309.5	76.2	80.3	50.5	148.3	63.2	102.4	129.5	208.3	1 497.6

% CHANGE FROM CORRESPONDING PERIOD OF PREVIOUS YEAR

1995													
May	-2.9	4.8	-2.4	-0.9	5.8	22.6	11.2	20.1	16.6	2.9	8.9	-0.2	5.2

EMPLOYED WAGE AND SALARY EARNERS.....

PRIVATE

GOVERNMENT.....

Month	Total '000	GOVERNMENT.....			Total '000
		Commonwealth '000	State '000	Local '000	
1994					
June	685.4	44.8	195.7	33.6	274.2
July	655.4	43.3	184.8	33.6	261.7
August	662.2	43.5	190.4	33.2	267.1
September	658.3	43.5	190.6	33.1	267.2

% CHANGE FROM CORRESPONDING PERIOD OF PREVIOUS YEAR

1994					
September	1.0	-5.6	-3.0	-1.5	-3.3

AVERAGE WEEKLY EARNINGS ¹.....

JOB VACANCIES

OVERTIME.....

Quarter	AVERAGE WEEKLY EARNINGS ¹		JOB VACANCIES '000	OVERTIME..... Average weekly hours per employee
	Males \$	Females \$		
1994				
August	610.20	530.50	12.8	1.31
November	623.30	526.10	9.4	1.25
1995				
February	629.60	531.70	9.5	1.21
May	643.50	545.40	6.1	1.16

% CHANGE FROM CORRESPONDING QUARTER OF PREVIOUS YEAR

1995				
February	2.3	3.1	48.9	25.3
May	4.3	5.7	-0.3	-9.8

¹ Full-time adult ordinary time.



LABOUR FORCE AND DEMOGRAPHY—Queensland *continued*

ESTIMATED RESIDENT POPULATION

POPULATION GROWTH DURING PERIOD.....

Quarter	'000	Natural increase	Net estimated interstate migration	Net estimated overseas migration	Total
		No.	No.	No.	No.
1994					
March	3 177.9	5 940	14 052	2 703	22 695
June	3 196.9	7 805	10 751	647	19 003
September	3 216.5	5 570	10 379	3 647	19 569
December	3 233.9	5 956	10 888	563	17 407

% CHANGE FROM CORRESPONDING PERIOD OF PREVIOUS YEAR

1994					
December	2.5	-2.3	-1.2	..	1.7

ESTIMATED RESIDENT POPULATION AT 30 JUNE.....

Year	Brisbane ¹	Moreton ¹	Wide Bay-Burnett ¹	Far North ¹	Queensland
	'000	'000	'000	'000	'000
1991	1 358.0	489.6	195.6	181.4	2 981.0
1992	1 387.3	510.4	201.5	185.5	3 032.8
1993	1 421.6	533.7	209.3	190.5	3 116.2
1994	1 454.8	558.8	216.1	195.8	3 196.9

INDUSTRIAL DISPUTES

AWARD RATES OF PAY INDEXES ²

SHORT-TERM OVERSEAS MOVEMENT

FULL-TIME ADULT EMPLOYEES

ARRIVALS

DEPARTURES

Month	Working days lost	Males	Females	'000	'000
	'000	Index No.	Index No.		
1995					
March	20.9	142.1	145.1	111.9	109.6
April	9.1	142.2	145.1	111.5	109.0
May	45.2	142.7	145.5	108.9	106.9
June	9.3	142.8	145.6	118.4	111.9

% CHANGE FROM CORRESPONDING PERIOD OF PREVIOUS YEAR

1995					
May	1 155.6	0.6	1.1	17.4	14.4
June	-48.0	0.8	1.0	18.6	14.5

¹ Statistical Division.

² Base: June 1985 = 100.0.



BUILDING AND CONSTRUCTION—Queensland

BUILDING APPROVALS.....

TREND..... ORIGINAL.....

Month	New houses	Total dwelling units	New houses	New other residential buildings	Total dwelling units	Value of dwelling units approved	Value of non-residential buildings approved	Total value of all building approved
	No.	No.	No.	No.	No.	\$m	\$m	\$m
1995								
April	2 151	3 062	1 796	995	2 791	275.7	78.7	371.1
May	2 073	2 951	2 114	1 013	3 127	285.3	256.8	564.1
June	2 012	2 852	2 150	1 110	3 260	288.4	398.3	706.4
July	1 972	2 772	1 986	593	2 579	232.0	147.9	408.1

% CHANGE FROM CORRESPONDING PERIOD OF PREVIOUS YEAR

1995								
July	-35.7	-41.8	-33.4	-60.7	-42.6	-42.7	6.6	-27.9

DWELLING UNIT COMMENCEMENTS..... ENGINEERING CONSTRUCTION

Quarter	New houses	New other residential buildings	Value of all dwelling units commenced	Value of non-residential buildings approved	Value of work commenced	Value of work done
	No.	No.	\$m	\$m	\$m	\$m
1994						
September	9 686	5 151	1 364	397.5	1 008.1	780.4
December	8 788	4 315	1 137	425.3	710.3	794.7
1995						
March	6 251	2 701	813	461.7	641.1	664.4
June	6 213	2 918	n.y.a.	n.y.a.	n.y.a.	n.y.a.

% CHANGE FROM CORRESPONDING PERIOD OF PREVIOUS YEAR

1995						
March	-22.4	-27.4	-18.2	-13.1	3.4	10.8
June	-32.7	-33.5	n.y.a.	n.y.a.	n.y.a.	n.y.a.

PRICE INDEXES

AUSTRALIA.....

Articles produced by manufacturing industry ¹..... Materials used in manufacturing industry ² Export ³ Import ³

Month	Food, beverages and tobacco	Basic metal products	Petroleum and coal products	Transport equipment	Fabricated metal products	All groups	Imported	Home produced	All materials	All groups	All groups
1995											
April	125.8	111.4	122.0	121.5	118.1	119.9	141.9	126.6	131.9	98.9	118.0
May	125.7	111.9	125.3	122.4	118.2	120.4	145.5	128.0	134.0	99.9	120.1
June	125.3	112.9	128.0	122.5	118.7	120.6	147.1	129.2	135.4	100.3	121.4
July	125.1	114.2	128.6	122.5	118.7	121.1	147.1	127.1	134.0	100.6	121.0

% CHANGE FROM CORRESPONDING PERIOD OF PREVIOUS YEAR

1995											
July	3.8	13.0	2.1	1.5	3.7	4.2	12.2	4.3	7.1	11.0	6.4

BRISBANE.....

QUEENSLAND.....

Consumer price index ³..... Established house ³ Prices received by farmers ⁴ Prices paid by farmers ⁴ Farmers' terms of trade ⁴

Quarter	Food	Housing	Transportation	All groups	Established house ³	Prices received by farmers ⁴	Prices paid by farmers ⁴	Farmers' terms of trade ⁴
1994								
September	110.7	101.1	115.8	112.5	139.3	109.6	120.5	90.9
December	111.0	104.0	115.4	113.7	140.0	109.9	120.7	91.0
1995								
March	114.1	109.0	116.7	115.8	140.2	114.5	124.2	92.2
June	114.5	110.7	117.4	116.9	137.7	117.7	128.1	91.9

% CHANGE FROM CORRESPONDING PERIOD OF PREVIOUS YEAR

1995								
June	3.9	9.9	3.2	4.8	-1.1	15.6	6.3	8.8

BRISBANE.....

Materials used in house building ⁵Materials used in building other than house ⁶.....

Month	All groups	Structural steel	Ready-mixed concrete	All groups
1995				
April	156.5	129.3	113.1	114.0
May	156.8	129.7	112.0	114.5
June	155.9	130.4	110.9	114.8
July	155.9	132.2	107.9	115.1

% CHANGE FROM CORRESPONDING PERIOD OF PREVIOUS YEAR

1995				
July	1.6	7.9	-6.7	3.6

¹ Base: 1988-89=100.0. ² Base: 1984-85=100.0. ³ Base: 1989-90=100.0. ⁴ Base: 1987-88=100.0. ⁵ Base: 1985-86=100.0. ⁶ Base: 1979-80=100.0.

BANKING AND FINANCE

QUEENSLAND—ALL BANKS ¹..... QUEENSLAND—BUILDING SOCIETIES.....

DEPOSITS..... LOANS..... LENDING OPERATIONS.....

Month	Term	Other ²	Total	Other lending ³	Loans advanced	Lending commitments unused	Receipts	Withdrawals
	\$m	\$m	\$m	\$m	\$m	\$m	\$m	\$m
1995								
April	16 833	16 160	32 993	42 067	103.5	142.7	1 749.4	1 788.5
May	17 346	16 257	33 603	42 428	108.8	157.7	1 947.3	1 906.8
June	17 364	16 213	33 577	42 941	120.2	151.7	2 004.4	1 854.6
July	17 507	16 609	34 116	43 691	97.4	142.9	2 075.0	2 026.3

% CHANGE FROM CORRESPONDING PERIOD OF PREVIOUS YEAR

1995								
July	26.5	-3.2	10.1	15.9	-34.7	-38.5	3.0	4.8

QUEENSLAND—FINANCE COMMITMENTS.....

PERSONAL..... COMMERCIAL..... LEASE

Month	All banks	Credit cooperatives	Finance companies	Other	Total	All banks	Finance companies	Other	Total	Total
	\$m	\$m	\$m	\$m	\$m	\$m	\$m	\$m	\$m	\$m
1995										
March	345.0	40.2	114.4	11.2	510.7	959.6	188.2	146.0	1 305.6	149.1
April	251.8	33.1	82.4	8.8	376.2	871.0	123.1	113.8	1 107.8	102.9
May	338.7	39.6	108.9	13.5	500.8	941.5	154.3	274.5	1 370.3	153.9
June	350.5	40.2	98.3	65.2	554.2	1 543.2	189.9	252.0	1 985.1	202.3

% CHANGE FROM CORRESPONDING PERIOD OF PREVIOUS YEAR

1995										
June	5.7	22.0	5.3	468.6	18.1	34.1	-3.2	205.1	38.8	-6.5

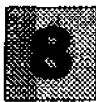
QUEENSLAND—HOUSING FINANCE FOR OWNER OCCUPATION..... AUSTRALIA—INTEREST RATES

Month	All banks	Permanent building societies	Other lenders	Total	Housing loans for owner occupation
	\$m	\$m	\$m	\$m	%
1995					
March	619.2	90.3	21.5	731.0	10.50
April	442.4	71.2	25.9	539.4	10.50
May	574.0	102.7	20.8	697.5	10.50
June	603.3	92.8	22.5	718.5	10.50

% CHANGE FROM CORRESPONDING PERIOD OF PREVIOUS YEAR

1995					
June	-16.2	-35.2	2.9	-18.8	..

¹ Source: Reserve Bank of Australia.² Including certificates of deposit.³ Excluding non-resident lending.



BUSINESS EXPECTATIONS

AUSTRALIA..... QUEENSLAND

TRADING PERFORMANCE..... INVESTMENT.... EMPLOY- MENT OPERATING EXPENSES INTERNATIONAL TRADE SALES

Quarter	Sales	Selling prices	Profit	INVESTMENT		EMPLOY- MENT	OPERATING EXPENSES	INTERNATIONAL TRADE		SALES
				Capital	Stocks			Imports	Exports	
1994										
December	2.3	0.6	10.6	1.1	—	0.5	1.3	0.9	2.2	3.6
1995	-0.5									
March		0.6	-7.7	1.5	0.6	-0.3	-0.1	0.7	0.6	-0.5
June	1.4	0.4	3.6	5.5	-0.3	0.1	1.0	1.5	0.8	1.0
September	1.3	0.7	1.5	5.3	-0.1	-0.2	1.1	2.6	-1.3	3.6

SHORT-TERM OUTLOOK—EXPECTED AGGREGATE CHANGE FROM THE PREVIOUS QUARTER (%)

1994										
December	2.3	0.6	10.6	1.1	—	0.5	1.3	0.9	2.2	3.6
1995	-0.5									
March		0.6	-7.7	1.5	0.6	-0.3	-0.1	0.7	0.6	-0.5
June	1.4	0.4	3.6	5.5	-0.3	0.1	1.0	1.5	0.8	1.0
September	1.3	0.7	1.5	5.3	-0.1	-0.2	1.1	2.6	-1.3	3.6

MEDIUM-TERM OUTLOOK—EXPECTED AGGREGATE CHANGE FROM THE CORRESPONDING QUARTER OF THE PREVIOUS YEAR (%)

1995	4.1	2.1	20.9	15.7	0.6	1.1	2.4	4.1	5.2	3.6
September										
December	3.3	1.8	15.1	1.0	0.6	0.6	2.1	2.9	1.7	2.3
1996										
March	3.0	1.7	4.6	3.7	0.5	0.8	2.6	3.0	3.2	3.1
June	2.3	1.5	2.8	7.1	-0.3	-0.1	2.1	2.6	1.0	3.6

AUSTRALIA.....

ACTUAL CAPITAL EXPENDITURE.....

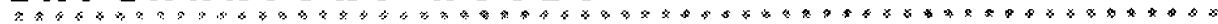
Period	New buildings and structures		Equipment, plant and machinery		Total
	\$m	\$m	\$m	\$m	\$m
1993-94	8 156		20 591		28 275
1994-95	8 966		25 625		34 591

AUSTRALIA.....

EXPECTED CAPITAL EXPENDITURE.....

Period	New buildings and structures		Equipment, plant and machinery		Total
	\$m	\$m	\$m	\$m	\$m
6 months to Dec. 1995	5 627		12 997		18 624
6 months to June 1996	4 607		11 879		16 487
1995-96	10 235		24 867		35 111

EXPLANATORY NOTES



INTRODUCTION

1 This publication contains latest estimates for a comprehensive range of economic indicators. Statistics shown in this publication are the latest available at the date of preparation and may be subject to revision in subsequent issues. In a number of cases figures appearing in this publication are preliminary and are subject to revision in subsequent issues. Reference should therefore always be made to the latest issue or to the statistical publication on the specific subject.

SEASONAL ADJUSTMENT AND TREND ESTIMATION

2 Seasonal adjustment is a means of removing the estimated effects of normal seasonal variation from the series so that the effects of other influences on the series can be more clearly recognised. Seasonal adjustment does not aim to remove the irregular or non-seasonal influences which may be present in any particular month. This means that month-to-month movements of the seasonally adjusted estimates may not be reliable indicators of trend behaviour.

3 The smoothing of seasonally adjusted series reduces the impact of the irregular components of the seasonally adjusted series and creates trend estimates. These trend estimates are derived by applying a 13-term Henderson-weighted moving average to all months except the last six. The last six monthly trend estimates are obtained by applying surrogates of the Henderson average to the seasonally adjusted series. Trend series are used to analyse the underlying behaviour of the series over time.

4 While this smoothing technique enables estimates to be produced for the latest month, it does result in revisions to the most recent months as additional observations become available. Generally, subsequent revisions become smaller and after 3 months have a negligible impact on the series. Revisions also occur as a result of the annual review of seasonal factors.

5 Users may wish to refer to the ABS Publication: *A Guide to Interpreting Time Series – Monitoring 'Trends' - An Overview* (1348.0) for more detailed information on smoothing seasonally adjusted time series data.

COMPOSITE LEADING INDICATOR

6 The CLI is calculated as a simple average of the short-medium term movements in eight indicators. On average during the 1970's and 1980's, the CLI led turning points in the GDP(A) growth cycle by around two quarters, but the lead time for individual peaks and troughs varied considerably. Expansions and slow downs in activity are measured relative to the historical long-term trend; thus *peaks and troughs in the CLI provide early signals of turning points in the growth cycle*, not signals of recessions and recoveries.

RELATED PUBLICATIONS

7 Current publications produced by the ABS are listed in the *Catalogue of Publications and Products* (1101.0). The ABS also issues, on Tuesdays and Fridays, the *Release Advice* (1105.0) which lists publications to be released in the next few days. The *Catalogue* and *Release Advice* are available from any ABS office.

UNPUBLISHED STATISTICS

8 As well as the statistics included in this and related publications, the ABS may have other relevant unpublished data available. Inquiries should be made to Information Inquiries on (07) 3222 6351 or to any ABS office.

EFFECTS OF ROUNDING

9 Estimates have been rounded and discrepancies may occur between totals and sums of the component items.

SYMBOLS AND OTHER USAGES

n.a.	not available
n.y.a.	not yet available
..	not applicable
—	nil or rounded to zero



FOR MORE INFORMATION

The ABS publishes a wide range of information on Australia's economic and social conditions. A catalogue of publications and products is available from any of our offices (see below).

INFORMATION CONSULTANCY SERVICES

Information tailored to special needs of clients can be obtained from the Information Consultancy Service available at ABS Offices (see below).

ABS PRODUCTS

A large number of ABS products is available from the ABS Bookshops (see below). The ABS also provides a subscription service – you can telephone the ABS Subscription Service Australia wide toll free on 1800 0206 08.

ELECTRONIC SERVICES

A large range of data is available via on-line services, diskette, magnetic tape, tape cartridge and CD ROM. For more details about our electronic data services, contact any ABS office (see below) or e-mail us at:

Keylink STAT.INFO/ABS
X.400 (C:AU,A:TEMEMO,O:ABS,SN:INFO,FN:STAT)
Internet STAT.INFO@ABS. TELEMOMO.AU

You can visit us on the Internet at:
<http://www.statistics.gov.au>

GENERAL SALES AND INQUIRIES

※ Sydney 02 268 4611 ※ Adelaide 08 237 7100
※ Melbourne 03 9615 7000 ※ Hobart 002 20 5800
※ Brisbane 07 3222 6351 ※ Darwin 089 43 2111
※ Perth 09 360 5140 ※ Canberra 06 252 6627

■ Information Services, ABS
PO Box 10, Belconnen ACT 2616



2130730009955

ISSN 0819-2928

RRP \$10.00

© Commonwealth of Australia 1995

Produced by the Australian Government Publishing Service